

---

4 ALBERT EMBANKMENT  
LONDON SE1 7SR  
Telephone: +44 (0)20 7735 7611 Fax: +44 (0)20 7587 3210

Circular Letter No.4204/Add.4  
5 March 2020

To: All IMO Member States  
United Nations and specialized agencies  
Intergovernmental organizations  
Non-governmental organizations in consultative status with IMO

Subject: **ICS Coronavirus (COVID-19) Guidance for ship operators for the protection of the health of seafarers**

The Secretary-General has received the attached Coronavirus (COVID-19) Guidance for ship operators for the protection of the health of seafarers, prepared by the International Chamber of Shipping in response to the coronavirus outbreak. Member States and international organizations are invited to make use of the Guidance, as they see fit, and circulate it to all interested parties, as deemed appropriate.

\*\*\*



ANNEX



## Coronavirus (COVID-19)

Guidance for Ship Operators for the  
Protection of the Health of Seafarers



### **Coronavirus (COVID-19)**

#### Guidance for Ship Operators for the Protection of the Health of Seafarers

Published by  
Marisec Publications  
38 St Mary Axe  
London EC3A 8BH

Version 1.0 – 3 March 2020

Tel: +44 20 7090 1460  
Email: [publications@marisec.org](mailto:publications@marisec.org)  
Web: [www.ics-shipping.org](http://www.ics-shipping.org)

© Marisec Publications 2020

While the advice given in this Guidance has been developed using the best information available, it is intended purely as guidance to be used at the user's own risk. No responsibility is accepted by Marisec Publications or by the International Chamber of Shipping or by any person, firm, corporation or organisation who or which has been in any way concerned with the furnishing of information or data, the compilation, publication or any translation, supply or sale of this Guidance for the accuracy of any information or advice given herein or for any omission herefrom or from any consequences whatsoever resulting directly or indirectly from compliance with or adoption of guidance contained therein even if caused by a failure to exercise reasonable care.



The International Chamber of Shipping (ICS) is the global trade association representing national shipowners' associations from Asia, the Americas and Europe and more than 80% of the world merchant fleet.

Established in 1921, ICS is concerned with all aspects of maritime affairs particularly maritime safety, environmental protection, maritime law and employment affairs.

ICS enjoys consultative status with the UN International Maritime Organization (IMO).

# **Coronavirus (COVID-19)**

## Guidance for Ship Operators for the Protection of the Health of Seafarers



**Version 1.0 – 3 March 2020**

**Coronavirus (COVID-19)**

Guidance for Ship Operators for the Protection of the Health of Seafarers

4 

## Contents

1	Introduction	5
2	Port Entry Restrictions	6
3	Protective Measures Against COVID-19 for Seafarers	7
4	Outbreak Management Plan for COVID-19	8
5	Pre-Boarding Information	8
6	Pre-boarding Screening	8
7	Information and Awareness	8
8	Suspected Cases of Infection	9
9	Close Contacts (High Risk Exposure)	10
10	Hygiene Measures for Seafarers on Ships	10
11	Management of Suspect Cases by Medical Support Providers	11
12	Precautions at the Ship Medical Facility	11
13	Laboratory Testing	11
14	Case Handling	12
15	Isolation	12
16	Reporting to the Next Port of Call	13
17	Disembarkation of a Suspect and a Confirmed Case	13
18	Cleaning, Disinfection and Waste Management	14
19	Management of Contacts of a Suspect Case	14
20	Supplies and Equipment	15
	Annex A – Posters	17
	Annex B – Sample Pre-Boarding Passenger Locator Form (PLF)	21
	Annex C – WHO COVID-19 Support and Logistics Supplies List, with availability advice provided by IMHA	22



**Coronavirus (COVID-19)**

Guidance for Ship Operators for the Protection of the Health of Seafarers

5

## 1 Introduction

In response to the current coronavirus (COVID-19) outbreak, this Guidance has been produced by the International Chamber of Shipping (ICS) to support all types of ships which operate in international waters. The purpose is to help shipping companies follow advice provided by United Nations agencies including the World Health Organization (WHO), the International Maritime Organization (IMO) and the International Labour Organization (ILO), as well as the European Centre for Disease Prevention and Control (ECDC).

COVID-19 – a virus which can lead to respiratory disease and pneumonia – was first reported in December 2019 in Wuhan, China. More than 90,000 cases have been reported at the time of going to print, including several thousand deaths. While most of these have been concentrated in China, the virus now appears to be spreading globally. No vaccine is currently available, and the focus of health authorities worldwide has been containment of the virus through preventative measures to limit and slow down widespread transmission.

The WHO has declared the outbreak a Public Health Emergency of International Concern under the WHO International Health Regulations (IHR).

This severe public health challenge requires close co-operation between governments and shipping companies engaged in maritime trade, in order to protect the health of seafarers (and passengers) as well as the general public.

ICS is grateful for the support of the following organisations in preparing this Guidance: IMO, ILO, WHO, International Maritime Health Association (IMHA), European Centre for Disease Prevention and Control (ECDC), Mediterranean Shipping Company S.A. (MSC) and Wilhelmsen Ships Service.



## Coronavirus (COVID-19)

Guidance for Ship Operators for the Protection of the Health of Seafarers

6

## 2 Port Entry Restrictions

WHO, as at 3rd March 2020, has not currently recommended any international travel or trade restrictions, and according to the IHR (and other international regulations) ships shall not be refused 'free pratique' by the IHR state parties for public health reasons, i.e. permission to enter a port, embark or disembark discharge or load cargo or stores. The IHR states Parties may subject granting free pratique to inspection, and, if a source of infection or contamination is found on board, conduct necessary, disinfection, decontamination, disinsection or deratting, or other measures necessary to prevent spread of the infection or contamination.

The WHO IHR can be available at [www.who.int/ihr/publications/9789241580496/en/](http://www.who.int/ihr/publications/9789241580496/en/)

Nevertheless, many governments have now introduced national and local restrictions including:

- Delayed port clearance;
- Prevention of crew or passengers from embarking or disembarking (preventing shore leave and crew changes);
- Prevention of discharging or loading cargo or stores, or taking on fuel, water, food and supplies; and
- Imposition of quarantine or refusal of port entry to ships (in extreme cases).

While such measures can severely disrupt maritime traffic – and may well be in breach of the IHR, the Convention on Facilitation of International Maritime Traffic (FAL Convention) and other maritime principles regarding the rights and treatment of seafarers and passengers – the reality is that shipping companies may have little choice but to adhere to these national and local restrictions due to the serious concern about COVID-19 and the potential risk to public health.

However, it is very important for port States to accept all ships (both cargo and passenger), for docking and to disembark suspected cases on board, as it is difficult to treat suspect cases on board and it could endanger others.

If any infection or contamination is found on board visiting ships, port States may take additional measures to prevent spread of the infection or contamination.

Together with flag States, companies and Masters should co-operate with port State authorities to ensure, where appropriate, that:

- Seafarers can be changed;
- Passengers can embark and disembark;
- Shore leave can continue if safe to do so;
- Cargo operations can occur;
- Ships can enter and depart shipyards for repair and survey;
- Stores and supplies can be loaded; and
- Necessary certificates and documentation can be issued.

ILO has advised that during the evolving COVID-19 outbreak, effective protection of the health and safety of seafarers must remain a priority. Under the ILO Maritime Labour Convention (MLC), flag States must ensure all seafarers on ships flying their flag are covered by adequate measures to protect their health and that they have access to prompt and adequate medical care while working on board.

Port States must ensure that any seafarers on board ships in their territory who need immediate medical care are given access to medical facilities on shore.

Wilhelmsen Ships Service has developed an interactive map on current port restrictions which is available at <https://wilhelmsen.com/ships-agency/campaigns/coronavirus/coronavirus-map>





**Coronavirus (COVID-19)**

Guidance for Ship Operators for the Protection of the Health of Seafarers

7 —

### 3 Protective Measures Against COVID-19 for Seafarers

Human-to-human transmission of COVID-19 is understood to occur primarily through droplets from a person with COVID-19, e.g. from coughing and sneezing, landing on objects and surfaces around the person. Other people then catch COVID-19 by touching these objects or surfaces, then touching their eyes, nose or mouth. People can also catch COVID-19 if they breathe in droplets from a person with COVID-19 who coughs, sneezes or breathes out droplets.

Seafarers (on board ship or on leave) should inform their healthcare providers if they have visited an area where COVID-19 has been reported within the past 14 days, or if they have been in close contact with someone with respiratory symptoms who has been to a place which has COVID-19.

If seafarers have fever, cough or difficulty breathing it is important to seek medical attention promptly.

When someone infected with a respiratory disease, such as COVID-19, coughs or sneezes they project small droplets containing the virus. Sneezing or coughing into hands may contaminate objects, surfaces or people that are touched. Standard Infection Protection and Control (IPC) precautions emphasise the vital importance of **hand and respiratory** hygiene. In particular:

- Frequent hand washing by crew (and passengers) using soap and hot water or alcohol-based (at least 65–70%) hand rub for 20 seconds;
- Avoidance of touching the face including mouth, nose and eyes with unwashed hands (in case hands have touched surfaces contaminated with the virus);
- Seafarers (and passengers) should be encouraged to cover their nose and mouth with a disposable tissue when sneezing, coughing, wiping and blowing the nose then dispose of the used tissue immediately;
- If a tissue is not available, crew should cover their nose and mouth and cough or sneeze into a flexed elbow;
- All used tissues should be disposed of promptly into a waste bin;
- Seafarers should aim to keep at least one metre (3 feet) distance from other people, particularly those that cough or sneeze or may have a fever. If they are too close, other crew members can potentially breathe in the virus; and
- Meat, milk or animal products should always be handled with care, to avoid cross-contamination with uncooked foods, consistent with good food safety practices.

It is important that seafarers should be given the time and opportunity to clean their hands after coughing, sneezing, using tissues, or after possible contact with respiratory secretions or objects or surfaces that might be contaminated.

Although face masks may provide some protection – especially if there is a risk of exposure when interacting with persons from outside the ship – the routine use of face masks is not generally recommended as protection against COVID-19. WHO advises that it is appropriate to use a mask when coughing or sneezing. If an individual is healthy, it is only necessary to wear a mask if the person is taking care of a person with the suspected COVID-19 infection.

[www.who.int/emergencies/diseases/novel-coronavirus-2019/advice-for-public/when-and-how-to-use-masks](http://www.who.int/emergencies/diseases/novel-coronavirus-2019/advice-for-public/when-and-how-to-use-masks)

**Hand and respiratory hygiene are considered far more important.**

Safety posters for ships are provided in **Annex A**.



## Coronavirus (COVID-19)

Guidance for Ship Operators for the Protection of the Health of Seafarers

8

# 4 Outbreak Management Plan for COVID-19

Ships should develop a written outbreak management plan. Seafarers on board should have knowledge of the outbreak management plan and implement it as required.

Passengers and Seafarers should receive information in accordance with the WHO advice for international traffic regarding the outbreak of COVID-19.

Advice is available on the WHO website for COVID-19 at [www.who.int/health-topics/coronavirus](http://www.who.int/health-topics/coronavirus)

# 5 Pre-Boarding Information

This Guidance uses information contained in the WHO Operational considerations for managing COVID-19 cases/outbreak on board ships, interim guidance 24 February 2020. It is also recommended to use this alongside the WHO Handbook for Management of Public Health Events on Board Ships.

[www.who.int/publications-detail/operational-considerations-for-managing-covid-19-cases-outbreak-on-board-ships](http://www.who.int/publications-detail/operational-considerations-for-managing-covid-19-cases-outbreak-on-board-ships)

# 6 Pre-boarding Screening

Until the end of the COVID-19 outbreak, all ships are advised to provide passengers and seafarers with general information on COVID-19 and its preventative measures and implement pre-boarding screening.

A sample pre-boarding Passenger Locator Form (PLF) is provided in **Annex B**. The purpose is to identify passengers who may need to have their boarding deferred or rescheduled and to ensure proper management by competent health authorities.

# 7 Information and Awareness

Ship Operators should provide guidance to crew on how to recognise the signs and symptoms of COVID-19. Crew should be reminded of the plan and procedures to follow if a passenger or crew member on board displays signs and symptoms of acute respiratory disease.

Country-specific guidance about prevention measures may be available, such as at [www.cdc.gov/quarantine/maritime/recommendations-for-ships.html](http://www.cdc.gov/quarantine/maritime/recommendations-for-ships.html)

Medical staff on board ships should be informed and updated about the outbreak of COVID-19 and any new evidence and guidance available. It is recommended to review the WHO website for COVID-19. Information about the use of medical masks can also be found on the website.

The posters provided at **Annex A** can also be used onboard to provide a gentle reminder of best practices for seafarers to adopt. They are also available for download from the ICS website at [www.ics-shipping.org/free-resources](http://www.ics-shipping.org/free-resources)



## Coronavirus (COVID-19)

Guidance for Ship Operators for the Protection of the Health of Seafarers

9

# 8 Suspected Cases of Infection

If people only have mild respiratory symptoms and have not visited an area where COVID-19 has been reported within the past 14 days, or if they have been in close contact with someone with respiratory symptoms who has been to a place which has COVID-19, they should still carefully practise basic hand and respiratory hygiene and isolate themselves, if possible, until fit.

If the virus spreads more widely this definition may change, but a **suspect case** requiring diagnostic testing is generally considered to be:

A patient with acute respiratory illness (fever and at least one sign/symptom of respiratory disease (e.g. cough, shortness of breath), and with no other set of causes that fully explains the clinical presentation **and** a history of travel to or residence in a country/ area or territory reporting local transmission of (COVID-19) during the 14 days prior to the onset of the symptoms.

Or

A patient with any acute respiratory illness **and** having been in contact with a confirmed or suspected COVID-19 case during the 14 days prior to the onset of the symptoms.

Or

A patient with severe acute respiratory infection (fever and at least one sign/symptom of respiratory disease e.g. cough, shortness of breath and requiring hospitalization **and** with no other set of causes that fully explain the symptoms.

Any person on board that may have been in close contact with a suspect case should be:

- Traced immediately after the suspect case is identified;
- Asked to remain on board until laboratory results of the suspect case are available (measures that apply following positive laboratory results are described below); and
- Categorised as either contacts with high risk exposure or with low risk exposure.

Further guidance can be found at

[www.who.int/publications-detail/global-surveillance-for-human-infection-with-novel-coronavirus-\(2019-ncov\)](http://www.who.int/publications-detail/global-surveillance-for-human-infection-with-novel-coronavirus-(2019-ncov))

All persons on board that fulfil the definition of a 'close contact' (see below) should be asked to complete a PLF (see **Annex B**) and remain on board the ship in their cabins or preferably at a specially designated facility ashore (if feasible and in case that the ship is at the turnaround port where embarking/disembarking passengers or discharging/loading cargos/stores takes place), in accordance with instructions received by the competent health authorities, until the laboratory result for the suspect case is available. Persons on board who do not fulfil the definition of a 'close contact' will be considered as having low risk exposure and should:

- Be requested to complete PLFs with their contact details and the locations where they will be staying for the following 14 days;
- Be provided with the following information and advice on the details of symptoms and how the disease can be transmitted;
- Be asked to self-monitor for COVID-19 symptoms, including fever of any grade, cough or difficulty breathing, for 14 days from their last exposure; and
- Be asked to immediately self-isolate and contact health services in the event of any symptom appearing within 14 days. If no symptoms appear within 14 days of their last exposure, the contact person is no longer considered likely to develop COVID-19.



## Coronavirus (COVID-19)

Guidance for Ship Operators for the Protection of the Health of Seafarers

10

# 9 Close Contacts (High Risk Exposure)

A 'close contact' is a person who, for example:

- Has stayed in the same cabin with a suspect/confirmed COVID-19 case;
- Has had close contact within one metre or was in a closed environment with a suspect/confirmed COVID-19 case (for passengers this may include sharing a cabin);
- Participated in common activities on board or ashore;
- Participated in the same immediate travelling group;
- Dined at the same table (for crew members this may include working together in the same ship area);
- Is a cabin steward who cleaned the cabin;
- Is restaurant staff who delivered food to the cabin;
- Is a gym trainer who provided close instruction to a case; or
- Is a medical support worker or other person providing direct care for a COVID-19 suspect or confirmed case.

Close contacts may be difficult to define on board a confined space such as a passenger ship, and if widespread transmission is identified then all persons on board could be considered as 'close contacts' having had high risk exposure.

# 10 Hygiene Measures for Seafarers on Ships

Ship operators should provide specific guidance and training for their seafarers regarding:

- Hand washing (using soap and hot water, rubbing hands for at least 20 seconds; one way to know how long 20 seconds is would be to silently sing "happy birthday to you!" twice);
- When hand washing is essential (e.g. after assisting an ill traveller or after contact with surfaces they may have contaminated, etc);
- When to hand rub with an antiseptic instead of hand washing, and how to do this;
- How to cough and sneeze hygienically (e.g. using disposable tissues or a flexed elbow);
- Appropriate waste disposal;
- When and how to use masks; and
- Avoiding close contact with people suffering from acute respiratory infections.



**Coronavirus (COVID-19)**

Guidance for Ship Operators for the Protection of the Health of Seafarers

11

## 11 Management of Suspect Cases by Medical Support Providers

If someone on board is suspected to have COVID-19, Personal Protective Equipment (PPE) for interview and assessment may be used by medical support providers.

Key outbreak control activities will include supportive treatment, e.g. giving oxygen, antibiotics, hydration and fever/pain relief.

## 12 Precautions at the Ship Medical Facility

The following precautions should be taken:

- Patients must cover their nose and mouth with a tissue when coughing or sneezing; or a flexed elbow if not wearing a mask. This should be followed by performing hand hygiene with an alcohol-based hand rub (at least 65–70%) or soap and hot water for 20 seconds.
- Careful hand washing should occur after contact with respiratory secretions.
- Suspect cases must wear a medical mask once identified and evaluated in a private room with the door closed, ideally an isolation room;
- Any person, including healthcare workers, entering the room should apply appropriate precautions in accordance with the requirements of WHO infection prevention and control during healthcare when COVID-19 is suspected; and
- After preliminary medical examination, if the ship's medical officer or person responsible for the provision of medical care believes a suspect case exists, the patient should be isolated.

If the illness is not considered a suspect case but the person has respiratory symptoms, the person should still not return to any places where they will be in contact with others onboard either seafarers or passengers..

## 13 Laboratory Testing

Laboratory examination of clinical specimens for suspect cases should be made with the competent authorities at the port who will then inform the ship's officers about test results.



## Coronavirus (COVID-19)

Guidance for Ship Operators for the Protection of the Health of Seafarers

12

## 14 Case Handling

Case handling should:

- Be initiated by the ship's medical care providers in order to detect any new suspect cases;
- Include directly contacting crew and passengers, asking about current and recent illnesses, and checking if any person meets the criteria for a suspect case; and
- Be recorded in the appropriate medical log book.

Medical care providers should:

- Ensure a suspect case is interviewed and provide information about the places they have visited within the last 14 days prior to the onset of symptoms and their contacts, including the period from one day before the onset of symptoms on board the ship or ashore; and
- Keep records regarding:
  - Anyone on board who has visited the medical facility as a suspect case and the isolation and hygiene measures taken;
  - Any close contact or casual contact with low risk exposure to monitor their health;
  - Contact details of casual contacts with low risk exposure who will disembark and the locations where they will be staying in the next 14 days (completed PLFs or Maritime Declarations of Health (MDHs)); and
  - Results of active surveillance.

## 15 Isolation

Isolate suspect cases on board immediately and inform the next port of call of suspect cases:

- With acute respiratory infection, either a cough, sore throat, shortness of breath, whether requiring hospitalisation or not;
- Who in the 14 days before onset of symptoms met the definition of a suspect case as outlined in sections 8 and 9.

Patients should be isolated in either an isolation ward, cabin, room or quarters with precautionary measures. Anyone entering an isolation room should wear gloves, impermeable gowns, goggles and medical masks.



## Coronavirus (COVID-19)

Guidance for Ship Operators for the Protection of the Health of Seafarers

13

## 16 Reporting to the Next Port of Call

The competent authority of the next port of call must always be informed if there is a suspect case on board.

For ships on an international voyage, if someone has died on board the International Health Regulations (IHR) state that the MDH should be completed and sent to the competent authority in accordance with local requirements.

The Master should immediately alert the competent authority at the next port of call about any suspect case to determine if the necessary capacity to transport, isolate, and care for the individual is available.

The ship may need to proceed, at its own risk, to another nearby port if capacity is not available, or if warranted by the critical medical status of the suspect case.

After measures applied are considered by the port health authority to be completed satisfactorily, the ship should be allowed to continue the voyage. The measures taken should be recorded in the valid ship sanitation certificates. Both embarking and disembarking ports must be notified of contacts on board and any measures taken.

## 17 Disembarkation of a Suspect and a Confirmed Case

The ship should take the following precautions:

- Control disembarkation to avoid any contact with other persons on board;
- The patient should wear a surgical mask; and
- Personnel escorting the patient should wear suitable PPE (gloves, impermeable gown, goggles and medical mask).

The ship may proceed to its next port of call once the health authority has determined that public health measures have been completed satisfactorily in particular the measures as follows:

- Management of the suspect case or cases and close contacts;
- Completion of contact tracing forms, disembarkation of close contacts; until the termination of COVID-19 Public Health Emergency of International Concern is declared. All passengers and crew members should fill in a PLF to be kept on board for at least one month after disembarkation;
- Information in the completed PLF should be provided upon the request of health authorities to facilitate contact tracing if a confirmed case is detected after the disembarkation and after the voyage has ended;
- Information has been provided to everyone on board about the symptoms and signs of the disease and who to contact in case the relevant symptoms develop in the following 14 days; and
- Cleaning and disinfection, and disposal of infectious waste.



## Coronavirus (COVID-19)

Guidance for Ship Operators for the Protection of the Health of Seafarers

14

# 18 Cleaning, Disinfection and Waste Management

Maintain high level cleaning and disinfection measures during ongoing on board case management.

Patients and 'close contacts' cabins and quarters should be cleaned and using cleaning and disinfection protocols for infected cabins (as per Norovirus or other communicable diseases).

Environmental surfaces should be cleaned thoroughly with hot water, detergent and applying common disinfectants (e.g. sodium hypochlorite).

Once a patient has left the ship, the isolation cabin or quarters should be thoroughly cleaned and disinfected by staff using PPE who are trained to clean surfaces contaminated with infectious agents.

Laundry, food service utensils and waste from cabins of suspect cases and contacts should be treated as infectious, in accordance with procedures for handling infectious materials on board.

There should be regular communications between departments in all ships (medical, housekeeping, laundry, room service, etc) about the persons in isolation.

# 19 Management of Contacts of a Suspect Case

Port health authorities will conduct risk assessments to identify all contacts, and issue instructions to follow until laboratory results are available.

All close contacts should either complete PLFs or MDHs and remain in their cabins or at a facility ashore and follow the competent authority's instructions until laboratory results are available. The forms should contain contact details and locations where the suspect case will stay for the following 14 days.

All close contacts should be informed about the suspect case on board.

If the laboratory examination results are positive:

- All close contacts should be quarantined for 14 days; and
- The patient should disembark and be isolated ashore in accordance with the competent authority's instructions.

Quarantine measures should follow WHO guidance of considerations for quarantine of individuals in the context of COVID-19 and are also likely to include:

- Active monitoring by the port health authorities for 14 days from last exposure;
- Daily monitoring (including fever of any grade, cough or difficulty breathing);
- Avoiding social contact and travel; and
- Remaining reachable for active monitoring.

Contacts of a confirmed case should immediately self-isolate and contact health services if symptoms appear within 14 days of last exposure. If no symptoms appear, the contact is not considered at risk.

Implementation of specific precautions may be modified following risk assessment of individual cases and advice from port health authorities.





**Coronavirus (COVID-19)**

Guidance for Ship Operators for the Protection of the Health of Seafarers

15

## 20 Supplies and Equipment

Flag States regulate medical supply carriage requirements. Plentiful supplies and equipment should be available to handle an outbreak as described in the International Medical Guide for Ships 3rd edition. Reviewing the latest WHO suggested list of supplies for COVID 19, the International Maritime Health Association (IMHA) has advised that most equipment should already be on board. However, WHO also recommends other equipment that is unlikely to already be on board which IMHA suggest could be provided by a port health authority.

A table is attached at **Annex C** outlining the supplies and equipment required in a situation of COVID-19. This is based on information provided by WHO and the IMHA.

[www.who.int/publications-detail/disease-commodity-package---novel-coronavirus-\(ncov\)](http://www.who.int/publications-detail/disease-commodity-package---novel-coronavirus-(ncov))



**Coronavirus (COVID-19)**

Guidance for Ship Operators for the Protection of the Health of Seafarers

16

## Annex A Posters

WHO and ECDC, among others, have provided advice to avoid the spread of COVID-19. To highlight their key messages and to help seafarers know how best to protect themselves and those they meet, ICS has produced the following three posters for ships.

The posters are also available to download from the ICS website at:

<http://www.ics-shipping.org/free-resources>



# COVID-19

## Protect yourself and others from getting sick

When coughing and sneezing, cover your nose and mouth with a tissue or a flexed elbow



Throw the tissue into a closed bin immediately after use



Clean your hands with an alcohol-based hand rub or with soap and hot water for at least 20 seconds:

- After coughing or sneezing
- When caring for the sick
- Before, during and after preparing food
- Before eating
- After toilet use
- When hands are visibly dirty



Avoid touching eyes, nose and mouth



International  
Chamber of Shipping

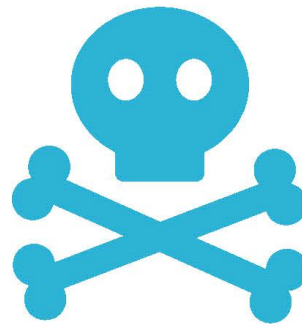
Shaping the Future of Shipping

# COVID-19 Practise Food Safety

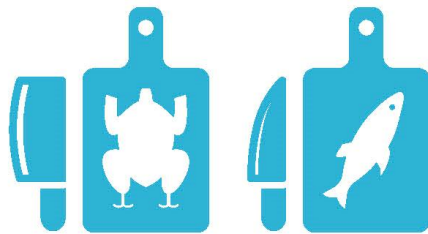
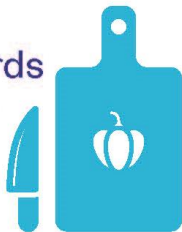
Meat products can be safely consumed if they are cooked thoroughly and properly handled during food preparation



Do not eat sick or diseased animals



Use different chopping boards and knives for raw meat and cooked foods



Wash your hands with soap and hot water for at least 20 seconds between handling raw and cooked food



International  
Chamber of Shipping

Shaping the Future of Shipping

# COVID-19

## Stay healthy while travelling

Avoid these modes of travel if you have a fever or a cough	
Eat only well-cooked food	Avoid spitting in public
Avoid close contact and travel with sick animals, particularly in wet markets	
When coughing and sneezing, cover your mouth and nose with a tissue or flexed elbow. Throw the tissue into a closed bin immediately after use and clean your hands	
Frequently clean your hands with an alcohol-based hand rub or with soap and hot water for at least 20 seconds	
Avoid touching eyes, nose and mouth	
Avoid close contact with people suffering from a fever or a cough	
If wearing a face mask, be sure it covers your mouth and nose and do not touch it once on. Immediately discard single-use masks after each use and clean your hands after removing masks	
If you become sick while travelling, tell crew or ground staff	
Seek medical care early if you become sick, and share your history with your health provider	



**Coronavirus (COVID-19)**

Guidance for Ship Operators for the Protection of the Health of Seafarers

## Annex B

### Sample Pre-Boarding Passenger Locator Form (PLF)

To be completed by any adult

Name as shown in the passport or other ID:

Names of all children travelling with you under 18 years old:


Within the past 14 days, have you, or any person listed above:

Yes No

- had close contact with anyone diagnosed as having Coronavirus disease (COVID-19)? .....
- provided direct care for COVID-19 patients, working with healthcare workers infected with novel coronavirus?.....
- visited or stayed in a closed environment with any patient having Coronavirus disease (COVID-19)? .....
- worked together in close proximity, or sharing the same classroom environment, with a COVID-19 patient? .....
- traveled together with COVID-19 patient in any kind of conveyance?.....
- lived in the same household as a COVID-19 patient?.....



**Coronavirus (COVID-19)**

Guidance for Ship Operators for the Protection of the Health of Seafarers

## Annex C

### WHO COVID-19 Support and Logistics Supplies List, with availability advice provided by IMHA

Items	Comment	Already carried on board?
<b>CHEMICALS</b>		
Antibiotics		Yes
Chlorine		Yes
Fever and pain medication		Yes
Sodium lactate solution		Yes
Alcohol-based hand rub	Bottle of 100ml and 500ml	Yes
Chlorine	NaDCC, granules, 1kg, 65 to 70% + dosage information	Yes
Paracetamol	500mg tablets	Yes
Sodium lactate compound solution	Ringer's lactate, injection solution, w/o IV set and needle, 1000ml	Yes
<b>PPE</b>		
Examination Gloves, EU MDD directive 93/42/EEC Category III, EU PPE Regulation 2016/425 Category III, EN 455, EN 374, ANSI/ISEA 105, ASTM D6319, or equivalent standards	Nitrile, powder-free, non-sterile. Cuff length preferably reaching above the wrist (e.g. minimum 230mm total length. Sizes, S, M, L). Plentiful supplies required.	Yes
Surgical Gloves, EU MDD directive 93/42/EEC Category III, EU PPE Regulation 2016/425 Category III, EN 455, EN 374, ANSI/ISEA 105, ASTM D6319, or equivalent standards	Nitrile, powder-free, single use. Gloves should have long cuffs, reaching well above the wrist, ideally to mid-forearm. (Sizes 5.0-9.0)	Yes
Gloves, cleaning	Outer glove should have long cuffs, reaching well above the wrist, ideally to mid-forearm. Cuff length preferably reach mid-forearm (e.g. minimum 280mm total length. Sizes, S, M, L), reusable, puncture resistant, FDA compliant	Yes
Impermeable gowns single use	Disposable, length mid-calf. - EU PPE Regulation 2016/425 and EU MDD directive 93/42/EEC • FDA class I or II medical device, or equivalent, EN 13795 any performance level, or AAMI PB70 all levels acceptable, or equivalent.	Yes, but check supplies are plentiful
Scrubs - Tunic/tops	Woven, scrubs, reusable or single use, short sleeved (tunic/tops), worn underneath the coveralls or gown	Yes, but check supplies are plentiful
Scrubs - Trouser/pants	Woven, scrubs, reusable or single use, short sleeved (tunic/tops), worn underneath the coveralls or gown	Yes, but check supplies are plentiful
Aprons	Heavy duty, straight apron with bib. Fabric: 100% polyester with PVC coating, or 100% PVC, or 100% rubber, or other fluid resistant coated material, Waterproof, sewn strap for neck and back fastening. Minimum basis weight: 300g/m <sup>2</sup> covering size: 70-90 cm (width) X 120-150cm (height). Reusable (if decontamination arrangements exist) EN ISO 13688, EN 14126-B and partial body protection (EN 13034 or EN 14605), EN 343 for water and breathability or equivalent.	Yes, but check supplies are plentiful
Goggles, protective EU PPE Regulation 2016/425, EN 166, ANSI/ISEA Z87.1, or equivalent	Good seal with facial skin, flexible PVC frame to easily fit all face contours with even pressure. Enclose eyes and surrounding areas. Accommodate prescription glasses wearers. Clear plastic lens with fog and scratch resistant treatments. Adjustable band to secure firmly and not become loose during clinical activity. Indirect venting to avoid fogging. May be reused (if decontamination arrangements exist) or disposable.	Yes, but check supplies are plentiful
Surgical masks for medicals ASTM F2100 minimum level 1 or equivalent*	Good breathability, clear internal and external faces. EU MDD directive 93/42/EEC Category III, or equivalent, EN 14683 Type II, IIR, IIR	Yes, but check supplies are plentiful
Patient masks EN 14683 any type including Type I*	Good breathability, clear internal and external faces	Yes, but check supplies are plentiful
Face shield (PPE)	Should be provided by Port Health Authority	Unlikely

\* Currently in short supply



**Coronavirus (COVID-19)**

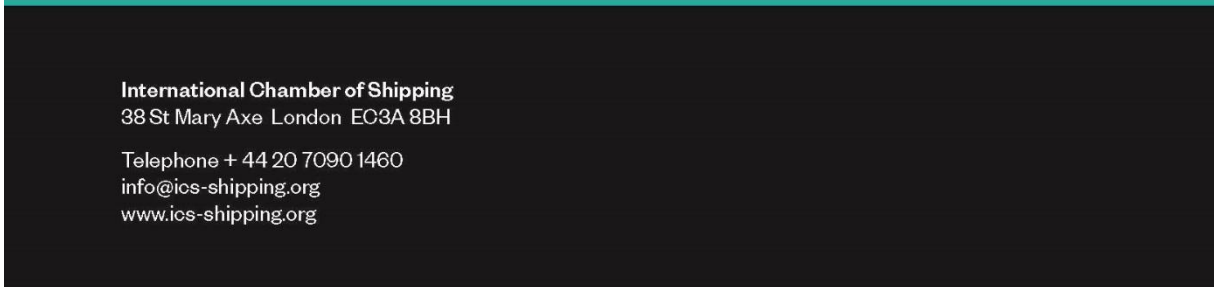
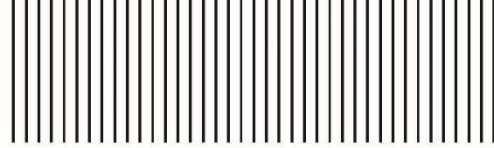
Guidance for Ship Operators for the Protection of the Health of Seafarers

Items	Comment	Already carried on board?
<b>MEDICAL KIT</b>		
Sample medium and packaging	Plentiful supplies required	Yes
Disinfectants	Plentiful supplies required	Yes
Hand hygiene supplies	Plentiful supplies required	Yes
Containers	For disposable sharps and needles	Yes
Guedel tubes		Yes
Infusion sets		Yes
Nose masks		Yes
Facial oxygen masks		Yes
Oximeter		Yes
Oxygen splitters		Yes
Safety bag and box		Yes
Commercial testing materials for samples	Ideally a third party should take samples for suspected cases. Specific materials needed to transport samples and to minimise infection Should be provided by Port Health Authority*	Unlikely
Fit test kit	Should be provided by Port Health Authority	Unlikely
Laryngoscope, with depressors and tubes	Should be provided by Port Health Authority	Unlikely
Oxygen concentrator	Should be provided by Port Health Authority	Unlikely
Portable ventilators	Should be provided by Port Health Authority	Unlikely
Portable ultrasound scanner	Should be provided by Port Health Authority	Unlikely
Resuscitator, child	Should be provided by Port Health Authority	Unlikely
Viral transport medium - to transport laboratory specimens	Should be provided by Port Health Authority	Unlikely
Viral transport medium with Swab 3 ml	Should be provided by Port Health Authority	Unlikely
Bio-hazardous bag	Disposal bag for bio-hazardous waste, 30 x 50cm, with "Biohazard" print, autoclavable polypropylene, 50 or 70 micron thickness	Yes
Carbon dioxide detector	"Disposable, colorimetric, sizes compatible with adult endotracheal tube (or child if applicable), unlikely to be in medical cabin but usually on board a ship. If not available ask Port Health Authority to provide along with appropriate guidance and accessories"	Unlikely
Endotracheal tube, without cuff	Open distal end and Magill-type point with oral angle of 37.5°, standard connector (ext. Ø 15mm) at the proximal end to connect the tube to the ventilation system, radio opaque mark, Murphy's eye, graduations, size: Ø internal 3mm or 3.5mm, material: polyvinyl chloride (PVC), disposable, sterile, initial sterilisation method: ethylene oxide gas or gamma radiation	Yes
Endotracheal tube with cuff	Same specification as for endotracheal tube, without cuff except size: Ø internal 6.5mm, 7mm, 7.5mm or 8mm	Yes
Hand drying tissue	50-100m roll	Yes
Infusion giving set	With air inlet and needle, sterile, single-use	Yes
Pulse oximeter	Compact portable device measures arterial blood oxygen saturation (SpO <sub>2</sub> ), heart rate and signal strength. Measuring range: SpO <sub>2</sub> 30 - 100% (minimum graduation 1%), heart rate 20-250 bpm (minimum graduation 1bpm). Line-powered, or extra batteries/rechargeable batteries needed at least one year. ISO 80601-2-61:2011 or equivalent	Yes
Resuscitator, adult	To ventilate adult (body weight > 30kg), with compressible self-refilling ventilation bag, capacity: 1475-2000ml. Resuscitator operated by hand, ventilation with ambient air, resuscitator shall be easy to disassemble and reassemble, to clean and disinfect, and be autoclavable. All parts must be of high-strength, long-life materials not requiring special maintenance or storage conditions	Yes
Sample collection triple packaging boxes	For transport as defined by the Guidance on Regulations for the Transport of Infectious Substances 2019-2020	Yes
Safety box	Needles/syringes, 5l - cardboard for incineration, box-25. Biohazard label as per WHO PQS E01Q/O11	Yes
Stainless steel depressor sets Miller	Straight Nr 1, length approx. 100mm	Yes
Stainless steel depressor sets Macintosh	Curved Nr 2, length approx. 110mm	Yes
Stainless steel depressor sets Macintosh	Curved Nr 3, length approx. 135mm	Yes
Stainless steel depressor sets Macintosh	Curved Nr 4, length approx. 155mm	Yes
Soap	Liquid (preferred), powder and bar	Yes

Contact a telemedicine provider to assist if you have difficulty accessing any equipment.







**International Chamber of Shipping**  
38 St Mary Axe London EC3A 8BH  
Telephone + 44 20 7090 1460  
[info@ics-shipping.org](mailto:info@ics-shipping.org)  
[www.ics-shipping.org](http://www.ics-shipping.org)